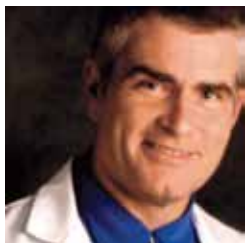


NADL University speakers you can't miss



Mark Murphy, DDS, FAGD

Murphy is the vice president of educational services for Mercer Advisors, director of professional relations for Quantum Dental Resources, and consults and lectures for dental laboratories, manufacturers and dentists throughout the United States and Canada through Funktional Design Group. Mark began as a laboratory technician before practicing general dentistry in Rochester, Mich. He continues to serve on various NADL committees and the Identalloy Council.



Mary Borg

SafeLink, Inc.

Mary is president and co-founder of SafeLink, Inc., a nationally recognized health and safety consulting firm. Since 1991, she has participated as a presenter and on-site instructor to dentists, dental hygienists, dental assistants and dental laboratory technicians throughout the U.S. Mary's prior experience included facilities management, human resources, risk management, crisis and disaster recovery, and health and safety.



Jennifer McBennett

Seay Management Consultants

Jennifer is executive vice president of Seay Management Consultants, a human resource management firm. She assists clients throughout the US by conducting management training, developing wage and salary programs, developing employee handbooks, and assisting in compliance with employment regulations. Jennifer writes articles on compliance with federal and state employment regulations, and conducts personnel management and labor relations audits for employers throughout the United States.



Dell Dine, CDT

National Dentex Corporation

Dell is vice president of research and development for National Dentex Corporation. He has educated doctors about esthetics, precision attachments, implant reconstruction and CAD/CAM restorations. Dell has been a headline presenter at the Chicago Dental Society's Midwinter Meeting and the American Association of Implant Dentistry's National Meeting as well as several universities and numerous study groups.

NADL University speakers, continued



Chuck Yenkner

Business Development Associates

Chuck is a veteran of more than 30 years in the dental industry. He is the founder and president of Business Development Associates, a firm dedicated to helping dental companies grow sales and profits. His clients have included DTI Dental Technologies, Inc., Whip Mix Corp., Dedeco, the Identalloy Council, Argen Corporation and numerous dental laboratories.



Mark Jackson

Precision Ceramics Dental Laboratory, DAMAS

Mark opened Precision Ceramics Dental Lab, DAMAS in Montclair, Calif., in 1981, and opened an export laboratory, The Hollywood Smile, in Odense, Denmark in 1991. He holds a number of dental patents and has lectured internationally about dental implants, laboratory management and veterinary dentistry. His laboratory has been featured on MTV and in the Wall Street Journal.



Jeff Stronk

Treasure Dental Studio

Jeff Stronk is co-owner of Treasure Dental Studio in Salt Lake City, Utah. He manages the implant department and general administration of the laboratory, and has been in the industry since 1990. Jeff currently serves as the laboratory representative for the Utah Dental Association, and is a past president of the Dental Laboratory Owners Business Association.



Tom Laughon

Catch Your Limit Consulting

Tom is president of Catch Your Limit Consulting, a management and marketing firm with offices in Tallahassee, Fla., and Richmond, Va. He specializes in marketing, advertising, consulting and providing leadership for businesses. His courses include creative strategy, professional selling, basic marketing and promotional management.